



**54 Summerhouse Grove, Newport, TF10 7DH**

**£1,050 Per Calendar Month**

Located in a convenient location in Newport this three bedroom detached property is sure to be in high demand with its fabulous living space, so early viewing is recommended. Key benefits include a large integral garage, lounge, dining room, play/study area, kitchen and utility room.

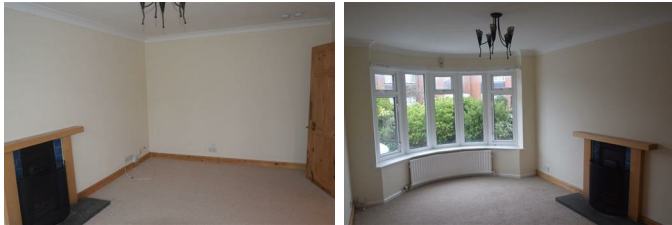
**Spacious Hall With Study/Play Area**



**Integral Garage**



**Lounge**



**Dining Room**

**Kitchen**



**Utility Room**

**WC**



**Bedroom One**



**Bedroom Two**





### Bedroom Three



### Bathroom



With bath, sink, toilet, and shower

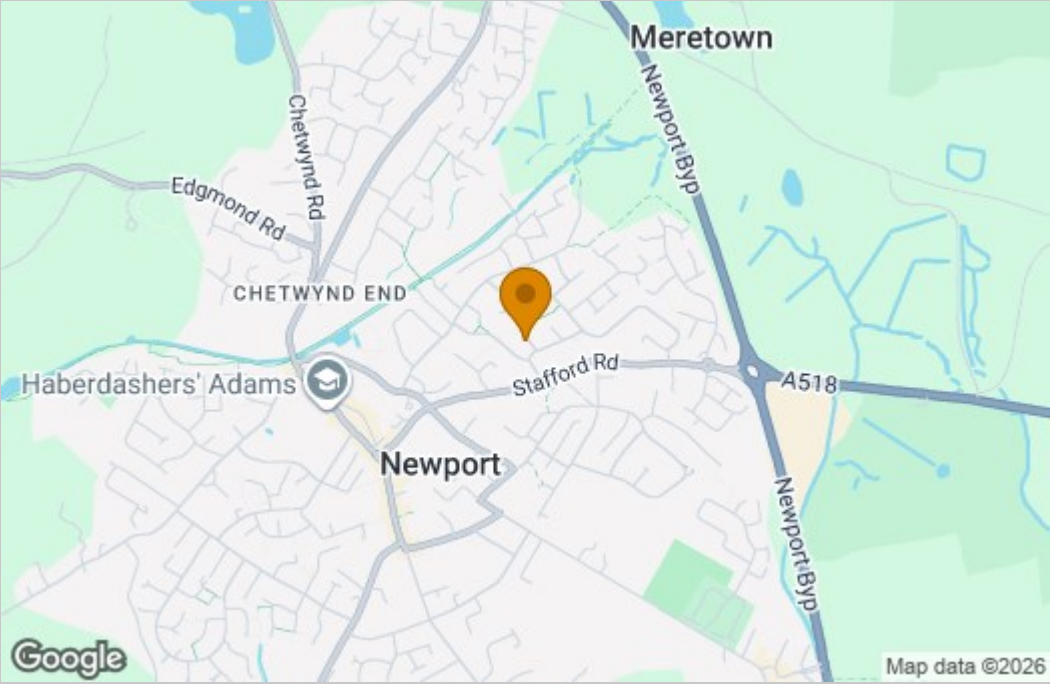
### Outside



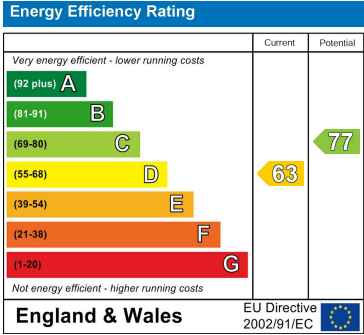
There is the benefit of good off road parking, a garage and an established rear garden.

Floor Plan

Area Map



Energy Efficiency Graph



These particulars, whilst believed to be accurate are set out as a general outline only for guidance and do not constitute any part of an offer or contract. Intending purchasers should not rely on them as statements of representation of fact, but must satisfy themselves by inspection or otherwise as to their accuracy. No person in this firms employment has the authority to make or give any representation or warranty in respect of the property.